

Picture similar

## Q water 5.5

### **MID-compliant, electronic water meter for screw connection**

- › metal flow sensor with nominal flow  $q_p$  2,5 m<sup>3</sup>/h and 4,0 m<sup>3</sup>/h
- › available in the installation lengths 80 mm, 110 mm and 130 mm
- › integrated radio technology for integration into a Q walk-by or Q AMR system
- › integrated IR interface for simple parameter setting or readout
- › simple mounting for almost any installation situation

## Application

The electronic water meter is used to measure water quantities. The main areas of application are water supply systems in which water is supplied individually to several consumers.

Such systems are used in e.g.:

- › apartment buildings
- › offices and administration buildings

Typical users are:

- › private building owners
- › housing industry and housing associations
- › building service companies and property management

## Features

- › measuring water consumption
- › accumulating the consumption values
- › saving the accumulated consumption values on the due date
- › display of consumption values
- › display of the most important operating data
- › self-monitoring with error display data transmission via radio
- › detection of leakage
- › parameter setting and readout via optical interface (IR-compatible)

## Radio (wireless) features C-Mode

- › Radio system – parallel transmission of Q walk-by- and OMS® -conformal data telegrams
- › Increased radio performance
- › No change with the remote sensor system


Q walk-by (PDW)	Q AMR (PDD)
every 112 seconds	every 450 seconds (7.5 minutes)
10 hours per day (8 am ... 6 pm)	24 hours per day
365 days a year	365 days a year
Transmitted data:	Transmitted data:
› current consumption value with date	› current consumption value with date
› last month's value with date and values from previous 12 months	› last month's value with date
› due date value with date	› due date value with date
› device status: error code and error date	› device status: error code and error date

## Radio (wireless) features S-Mode

- › Radio system – parallel transmission of Q walk-by- and Q AMR-data telegrams
- › Increased radio performance
- › Transmission delay (offset)  
Time delay for sending data telegrams after the due date or at the beginning of the moth in days (standard = 0 days)
- › Transmission-free day  
A maximum of 2 days from Friday, Saturday and Sunday can be defined as transmission-free days At least 1 day must be set (standard = Sunday)
- › No change with the remote sensor system

Q walk-by	Q AMR
every 128 seconds	every 4 hours
10 hours per day (8 am ... 6 pm)	24 hours per day
monthly: 4 readout dates after the first day of each month	7 days per week
annual: 48 days after due date	365 days per year
Transmitted data:	Transmitted data:
› current consumption value with date	› current consumption value with date
› last month's value with date and values from previous 12 months	› last month's value with date
› due date value with date	› due date value with date
› device status: error code and error date	› device status: error code and error date

## Technical data

General	
	<p>QUNDIS GmbH hereby declares that the electronic water meter Q water 5.5 complies with directives 2011/65/EU (RoHS) and 2014/32/EU (MID).</p> <p>The full text of the EU Declaration of Conformity is available at the following Internet address: <a href="https://qundis.com/service/downloads-and-information/eu-declaration-of-conformity/#qr01">https://qundis.com/service/downloads-and-information/eu-declaration-of-conformity/#qr01</a></p>
Ambient conditions	
Protection rating	IP65, IP68 <sup>1</sup> according to EN 60529
Protection class	III according to EN 61140
Transport	-25 °C ... 70 °C, < 95 % r.F. (without condensation)
Storage	-5 °C ... 45 °C, < 95 % r.F. (without condensation)
Usage	5 °C ... 55 °C, < 95 % r.F. (without condensation)
Standards	
Interference resistance and interference emission	EN 301 489-1, EN 301 489-3
Security	EN 62368-1
Influencing quantities	
Electromagnetic class	E1
Mechanical class	M1

<sup>1</sup> tested according to manufacturer specifications

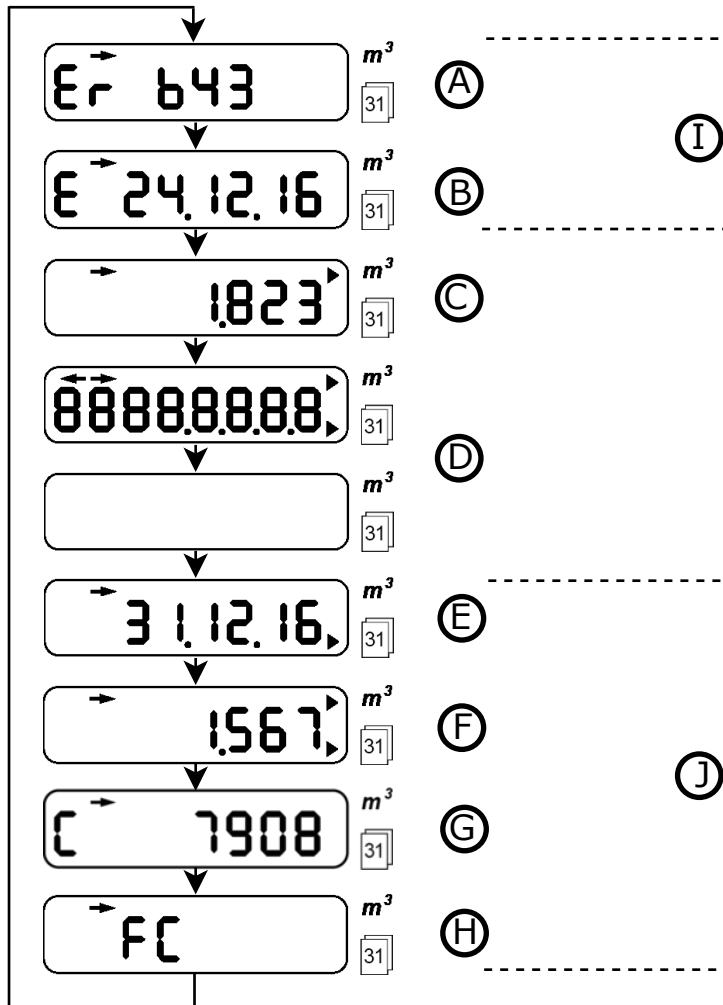
Radio technology			
Radio mode	S-Mode (Q AMR, Q walk-by) C-Mode (Q AMR, Q walk-by)		
Radio frequency	EN 300 220-2 S-Mode (868.30 +/- 0.30) MHz C-Mode (868.95 +/- 0.25) MHz		
Transmission power	typical 10 dBm, maximum 14 dBm		
Encryption <sup>2</sup>	Security Mode 5 according to EN 13757-7, Security Profile A according to OMS specification		
Data transmission	EN 13757-4		
Duty Cycle	< 1 % (50ms/128 s)		
Power supply			
Lithium battery	Nominal voltage 3.0 V		
Battery life	10 years operation + 1 year reserve + 1 year storage		
Flow sensor			
Max. permissible operating pressure (MAP)	1.6 MPa (16 bar)		
Pressure loss class according to ISO 4064	$\Delta p$ 63		
Inflow and outflow zone	not required (U0/D0)		
Type overview	WME5 xxxx 0	WME5 xxxx 1	WME5 xxxx 2
Overall length	80 mm	110 mm	130 mm
Meter size / Continuous flow $Q_3$		2.5 m <sup>3</sup> /h	4.0 m <sup>3</sup> /h
Corresponds to previous nominal size $Q_n$		1.5 m <sup>3</sup> /h	2.5 m <sup>3</sup> /h
Connection thread		G 3/4"	G 1"
Overload flow rate $Q_4$		3.125 m <sup>3</sup> /h	5,000 m <sup>3</sup> /h
Transition flow rate $Q_2$ (H/V)		50/100 l/h	80/160 l/h
Minimum flow rate $Q_1$ (H/V)		31.25/62.5 l/h	50/100 l/h
Dynamic range $Q_3/Q_1$ (H/V) <sup>3</sup>		R80/R40	
Permanent load $Q_3$		2,500 l/h	4,000 l/h
Temperature class MAT		Cold water T30 or Hot water T30/T90	

<sup>2</sup> Encryption optional

<sup>3</sup> further dynamic ranges on request

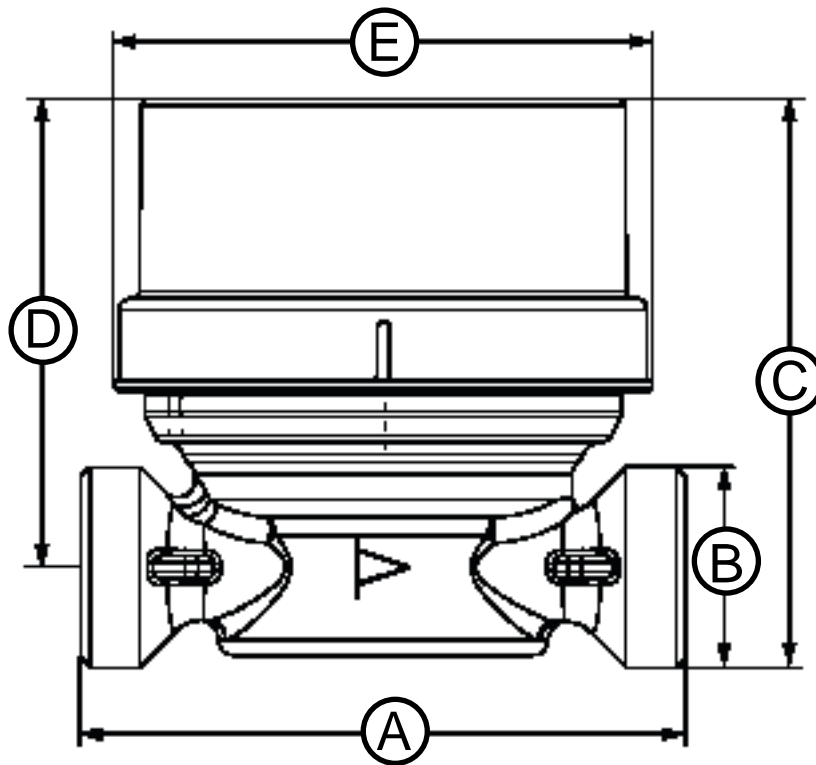
## Display

Device statuses and consumption values are shown on the LC display in a display loop.



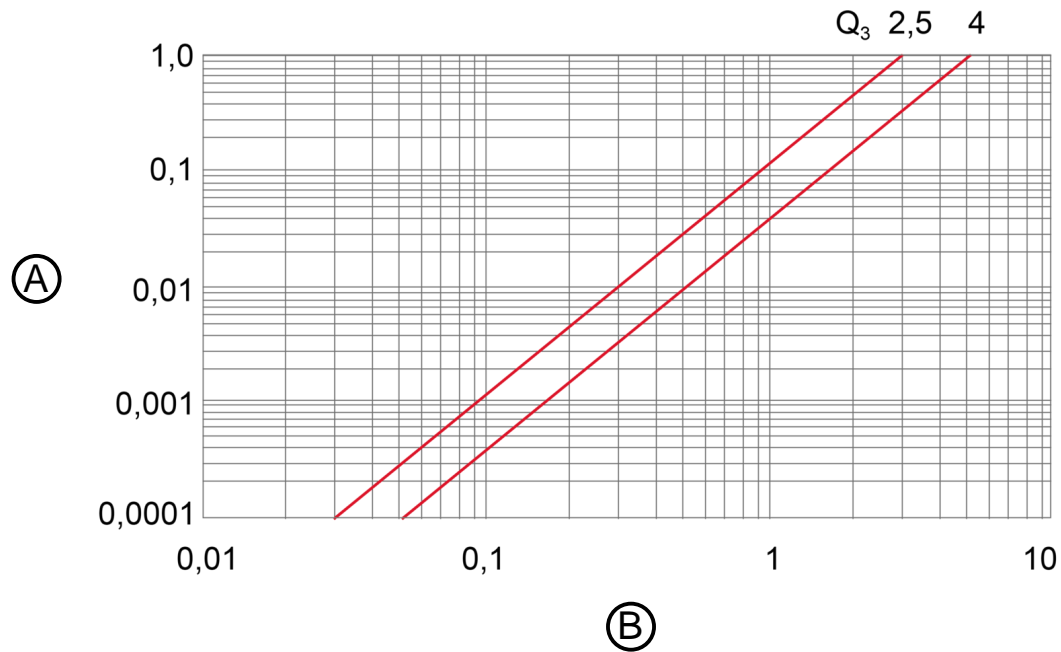
- (A) Error code (2 sec)
- (B) Error date (2 sec)
- (C) cum. volume (5 sec)
- (D) Segment test: Display on/off (0,5 sec)
- (E) last due date (5 sec)
- (F) Consumption until last due date (5 sec)
- (G) Checksum (2 sec)
- (H) Radio mode (2 sec)
- (I) displayed only in the event of an error
- (J) can be shown and hidden via parameterisation software

## Dimensional drawings



	2.5 m <sup>3</sup> /h	2.5 m <sup>3</sup> /h	4.0 m <sup>3</sup> /h
A	80 mm	110 mm	130 mm
B	G 3/4 B	G 3/4 B	G 1 B
C	75,1 mm	75,1 mm	78,4 mm
D	61,9 mm	61,9 mm	61,9 mm
E	71 mm	71 mm	71 mm

## Pressure loss curve



- (A) Pressure loss in bar  
(B) Flow rate in m³/h

**QUNDIS GmbH**  
Sonnentor 2  
99098 Erfurt  
Germany  
Phone.: +49 (0) 361 26 280-0  
Fax: +49 (0) 361 26 280-175  
E mail: info@qundis.com  
[www.qundis.com](http://www.qundis.com)

A company of the  
**noventic group**

The information in this data sheet only contains general descriptions or product characteristics, which may not always apply in particular application cases and/or may be subject to change through further development of the product. Required product characteristics are then binding if they are expressly agreed when the contract is drawn up.  
©2025 QUNDIS GmbH. Subject to change.